

# OUTBACK POLO FARM

IN SECTION 22, TOWNSHIP 44 SOUTH, RANGE 41 EAST  
 VILLAGE OF WELLINGTON  
 PALM BEACH COUNTY, FLORIDA  
 OCTOBER, 2007 IN 2 SHEETS,  
 SHEET 2 OF 2

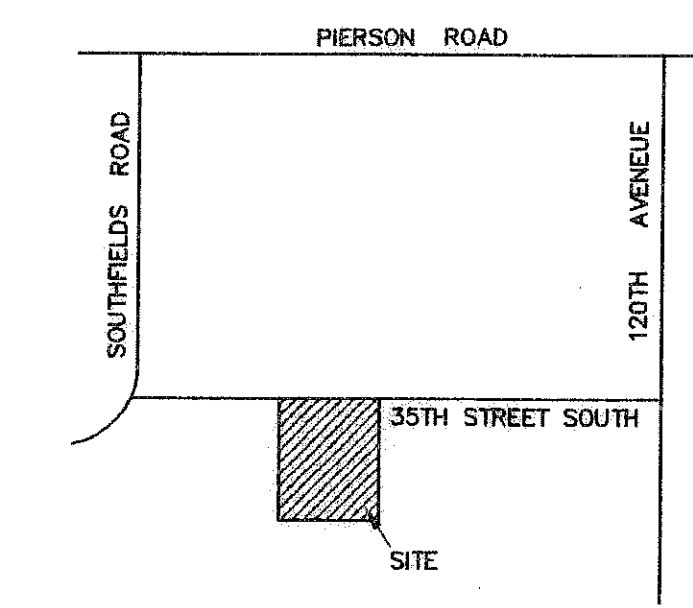
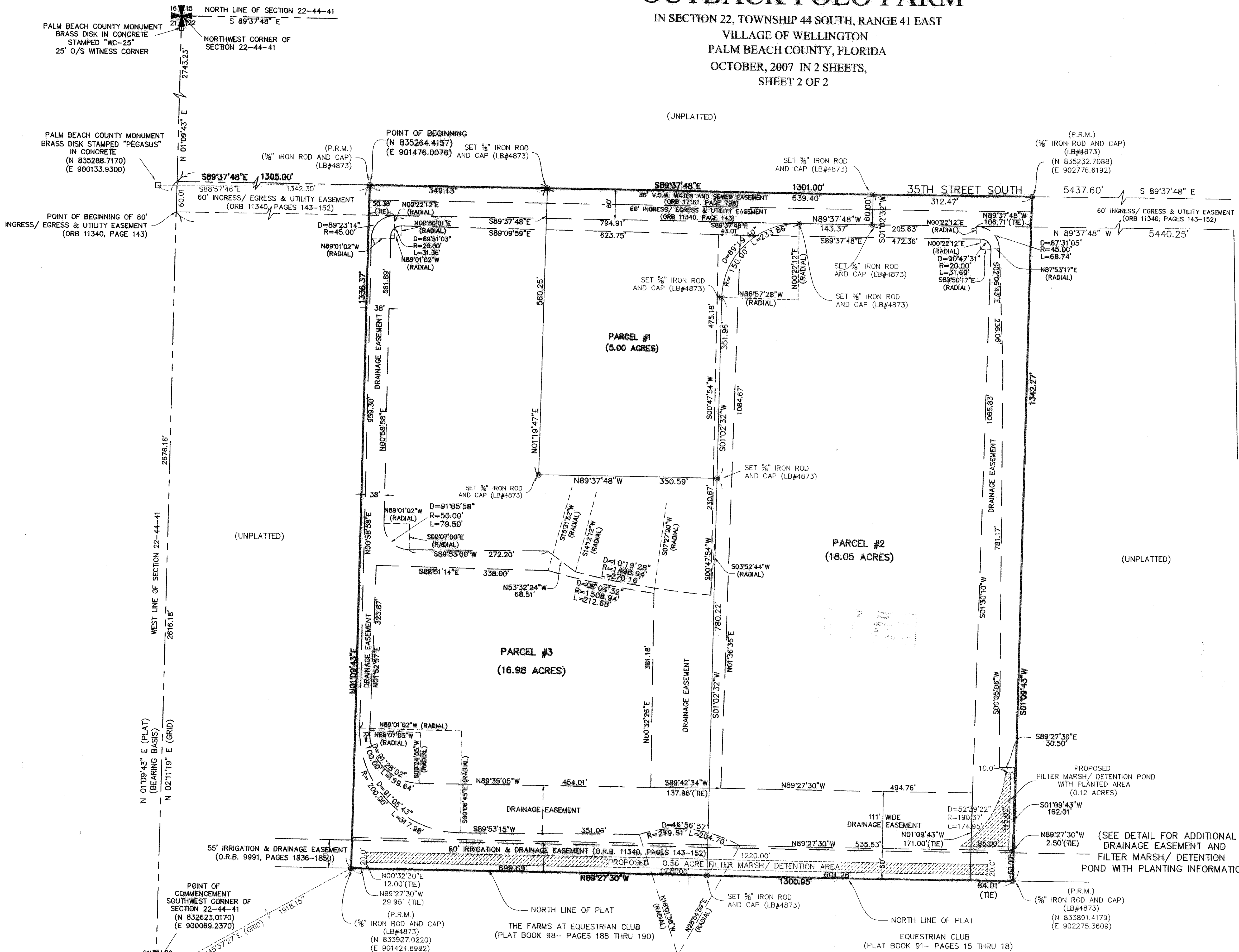
182

STATE OF FLORIDA  
 COUNTY OF PALM BEACH

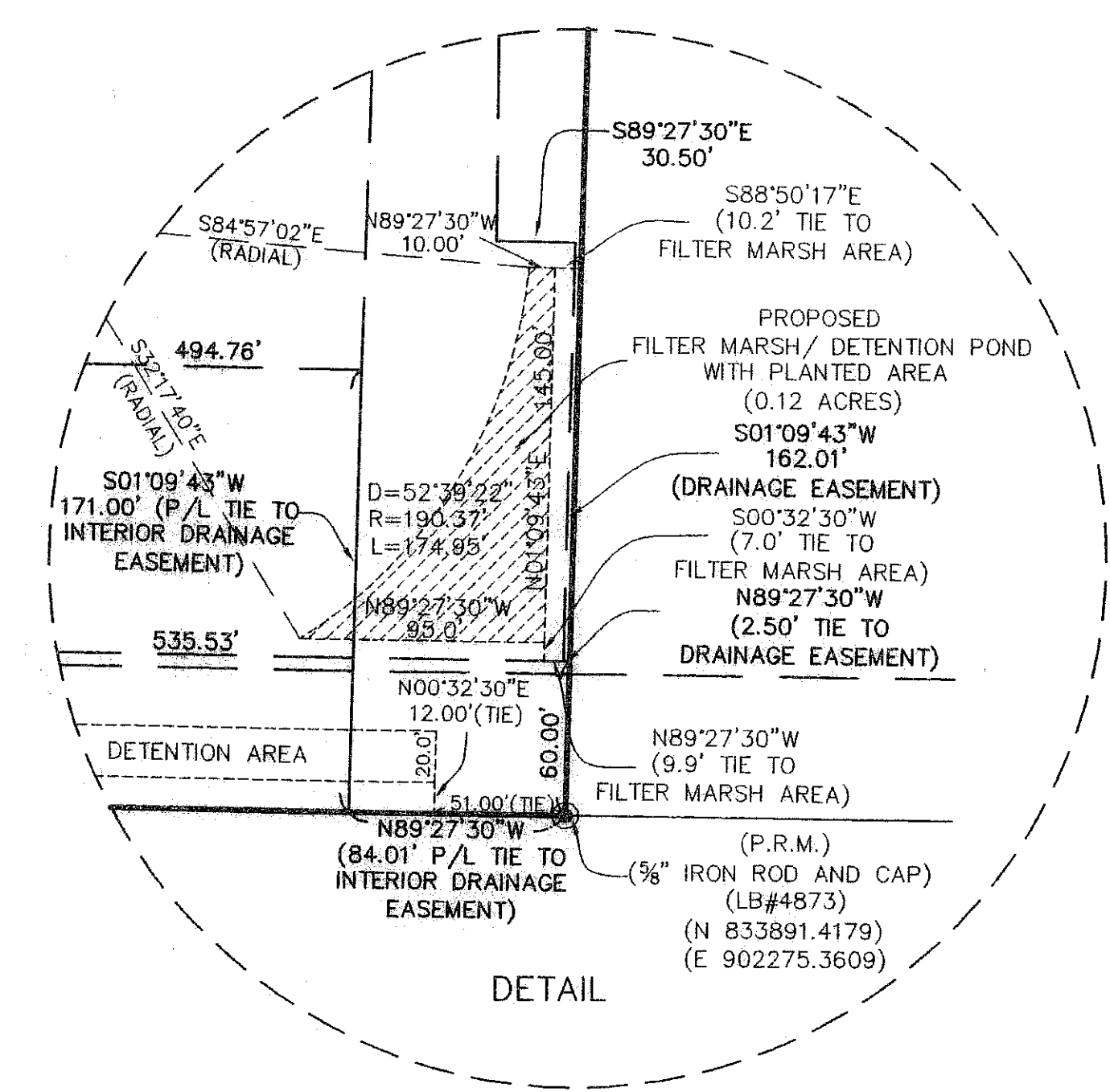
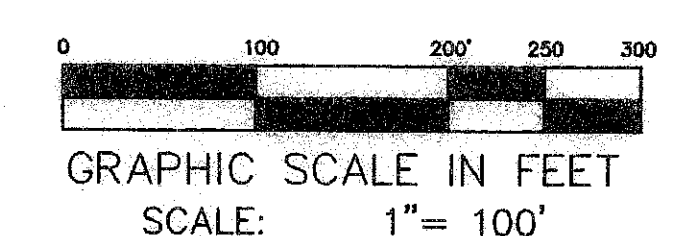
This Plat was filed for record  
 at \_\_\_\_\_ M. this \_\_\_\_\_ day  
 of \_\_\_\_\_ 2007,  
 and duly recorded in Plat Book  
 No. \_\_\_\_\_ on page \_\_\_\_\_

SHARON R. BOCK,  
 Clerk Circuit Court  
 & Comptroller

By \_\_\_\_\_, D.C.



LOCATION MAP not to scale



**LEGEND**

- PRM = Permanent Reference Monument
- ⊙ = 5/8" Iron Rod and Cap (LB#4873)
- V.O.W. = Village of Wellington
- O.R.B. = Official Record Book
- P/L = Property Line
- JACK H. CASLER, P.S.M.  
 FLORIDA CERTIFICATE NO.: LS 2731

**JDC** Development Services, Inc. LB#4873

Wellington Country Plaza  
 12777 W. Forest Hill Blvd., Suite 1503, Wellington, FL 33414

Fax: (561) 790-4488 (561) 790-4471